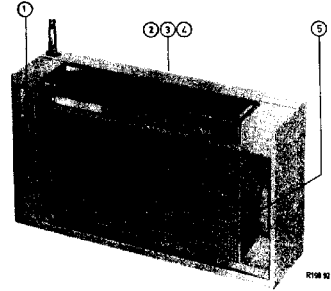


PHILIPS *Service*

RADIO

L2X12T/OOF/OOK/OW



Controls

Volume control
Wave switch:
F.M.
L.W.
M.W.
Tuning

1
2
3
4
5

Bediening

Volumeregelaar
Golflengteschak.:
F.M.
L.G.
M.G.
Afstemming

Bedienung

Lautstärkeregl.
Wellenbereichschalter:
UKW
LW
MW
Abstimmung

Commande

Contrôle de volume
Comm. des gammes :
F.M.
C.O.
P.O.
Syntonisation

Organes de mando

Control de volumen
Comm. de márgenes :
F.M.
O.L.
O.N.
Sintonfa

Specification

Loudspeaker AD 3207 ZD
I.F. A.M.: 452 kc/s
F.M.: 6,75 Mc/s
Battery 6 V (4x1,5 V)
Consumption 25 mA
Output 100 mW
Dimensions 171x98x42,5mm
6³/₄"x3⁷/₈"x1¹¹/₁₆"

Specificatie

Luidspreker
M.F.
Batterij
Verbruik
Uitgangsverm.
Afmetingen

Spezifikation

Lautsprecher
ZF
Batterie
Verbrauch
Ausgangsleistung
Abmessungen

Specification

Haut-parleur
M.F.
Batterie
Consumation
Puissance
Dimensions

Especificación

altavoz
F.I.
Batería
Consumo
Potencia de salida
Dimensiones

Wave ranges - Golfgebieden - Wellenbereiche - Gammes d'ondes - Márgenes de ondas

L.W. - L.G. - LW - C.O. - O.L. : 2000 - 1137 m (150 - 262 kc/s)
M.W. - M.G. - MW - P.O. - O.M. : 580 - 185 m (517 - 1612 kc/s)
F.M. - F.M. - UKW - F.M. - F.M. : 3,43 - 3 m (87,5 - 100 Mc/s)

Transistors

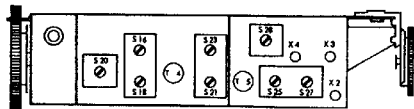
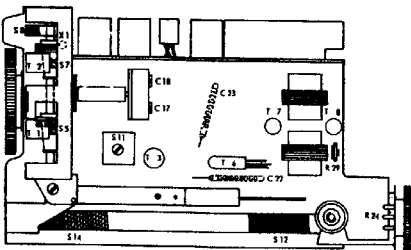
TS1 - AF114 TS6 - OC75
TS2 - AF115 TS7,8 - 2-OC74
TS3 - AF116 GR1 - OA90
TS4 - AF116 GR2,3 - 2-OA79
TS5 - AF116 GR4 - OA79

| | | | | | | | | | | | | | | | | | | | |
|---------------------|--|--|--|--|--|--|--|--|--|--|--|--|--|--|--|--|--|--|--|
| SERVICE INFORMATION | | | | | | | | | | | | | | | | | | | |
|---------------------|--|--|--|--|--|--|--|--|--|--|--|--|--|--|--|--|--|--|--|

Copyright Central Service Division N.V. PHILIPS' GLOEILAMPENFABRIEKEN, Eindhoven

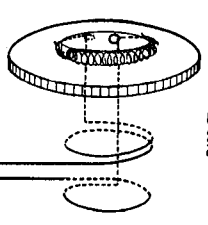
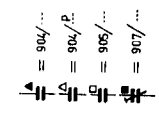
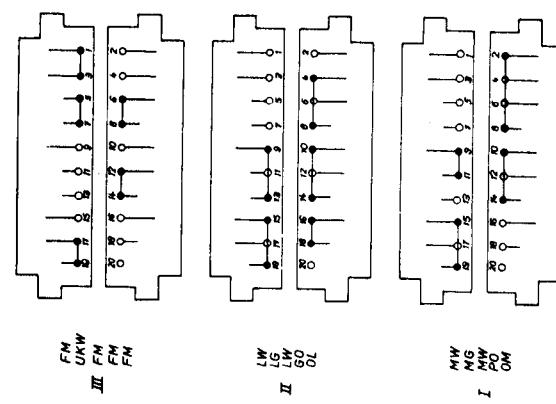
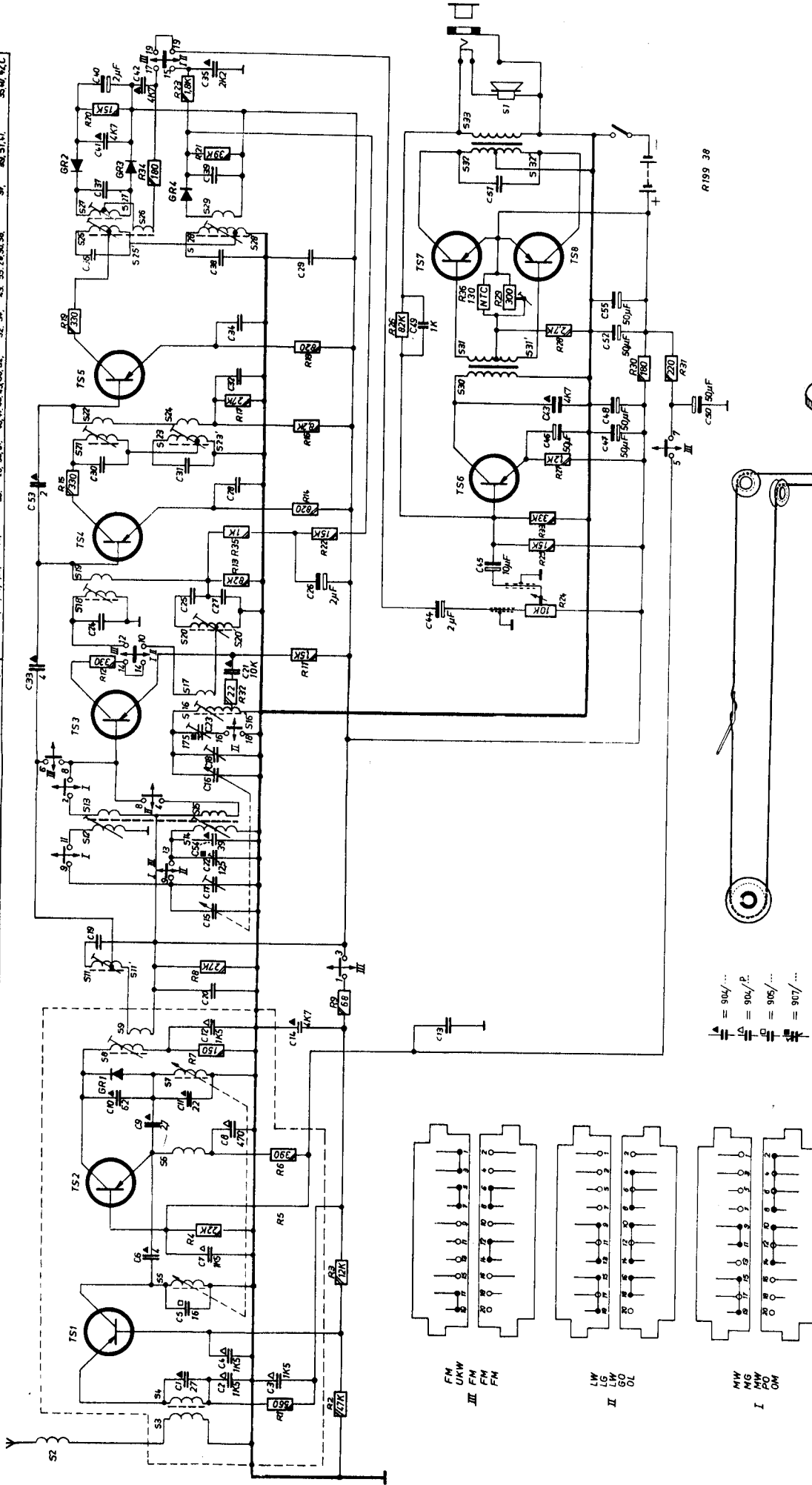
Confidential information for Philips Service Dealers.

| | | | | | |
|---|--|---------------------------------------|--|---|------------------------|
| Sery. - 0 - Mecum E - a - 1 E - a - 2 E - a - 3 | Wave switch Golfl. sch. Wellenber.sch. Comm. tes gamme Conn. de margenes | Varco Varco Drehko Cond.var. | Signal Signaal Signal Signal Señal | Adjust to max. output Afregelen op max. uitgangsp. Abgleichen auf max.Ausgangsp. Régler au max. de sortie Ajustense al max. de salida | |
| I.F. circuits M.F.-kringen ZF-Kreise (A.M.) Circuits M.F. Circuitos de F.I. | 4 | min. | 460 kc/s via 33000 pF B - TS3 | S28 - S23 - S20 | |
| R.F. circuits H.F.-kringen HF-Kreise (A.M.) Circuits H.F. Circuitos de R.F. | 4 | max. | 512 kc/s | S16 | |
| | | min. | 1620 kc/s | C18 | |
| | | 600 kc/s | 600 kc/s | S12 | |
| | 3 | 1500 kc/s | 1500 kc/s | C17 | |
| | | max. | 145 kc/s | C23 | |
| | | 170 kc/s | 170 kc/s | S14 | |
| 240 kc/s | 240 kc/s | C22 | | | |
| I.F. circuits M.F.-kringen ZF-Kreise (F.M.) Circuits M.F. Circuitos de F.I. | 2 | 93 Mc/s | 6,75 Mc/s via 1500 pF B - TS4 | S25 / 26 S27 | max. D.V. O.V. D.V. |
| | | | 6,75 Mc/s via 1500 pF B - TS3 | S21 | max. D.V. |
| | | | 6,75 Mc/s via 1500 pF B - TS3 | S18 | max. D.V. |
| | | | 6,75 Mc/s via 1500 pF | S11, S8 | max. D.V. |
| R.F. circuits H.F.-kringen HF-Kreise (F.M.) Circuits H.F. Circuitos de R.F. | 2 | 88 Mc/s | 88 Mc/s | S7 | |
| | | 93 Mc/s | 93 Mc/s | S5 | |



R 200 68

| | | | | | | | | | | | | | | |
|---|----------|----|----|--------|-----------|-----------|-----------|-----------|-----------|-----------------|-----------|-----------|--------------|-----------|
| C | 1.2.3.4. | 5. | 6. | 7.8.9. | 10.11.12. | 13.14.15. | 16.17.18. | 19.20.21. | 22.23.24. | 25.26.27.28.29. | 30.31.32. | 33.34.35. | 36.37.38.39. | 40.41.42. |
| R | 1.2.3.4. | 5. | 6. | 7.8.9. | 10.11.12. | 13.14.15. | 16.17.18. | 19.20.21. | 22.23.24. | 25.26.27.28.29. | 30.31.32. | 33.34.35. | 36.37.38.39. | 40.41.42. |
| S | 1.2.3.4. | 5. | 6. | 7.8.9. | 10.11.12. | 13.14.15. | 16.17.18. | 19.20.21. | 22.23.24. | 25.26.27.28.29. | 30.31.32. | 33.34.35. | 36.37.38.39. | 40.41.42. |
| T | 1.2.3.4. | 5. | 6. | 7.8.9. | 10.11.12. | 13.14.15. | 16.17.18. | 19.20.21. | 22.23.24. | 25.26.27.28.29. | 30.31.32. | 33.34.35. | 36.37.38.39. | 40.41.42. |



R199 76

R199 38

| | | | | | |
|--|---|--|---|---|---|
| Cabinet, front part: OOK version OOF version OOV version | Kast, voorkant: OOK-uitvoering OOF-uitvoering OOV-uitvoering | Gehäuse, Vorderteil: OOK-Ausführung OOF-Ausführung OOV-Ausführung | Coffret, front: exécution OOK exécution OOF exécution OOV | WE 731 43 WE 731 44 WE 731 45 | Mueble, frente: ejecución OOK ejecución OOF ejecución OOV |
| Rear cover: Battery holder Ornamental front Aerial | Achterwandkabel Batterijhouder Sierfront Antenne | Rückdeckel Batteriehälter Sierfront Antenne | Convertis arrière Porte-pile Fiche enjoliveuse Antenne | WE 744 62 WE 340 08 WE 305 20 WE 333 76 | Cubierta posterior Porte-pila Ficha ornamental Antena |
| Female plug, earphone | Contraplug, oortelefoon | Contrastecker, Kopfhörer | Fiche femelle, casque téléphone | WE 340 08 | Clavija hembra, casaco telefono |
| Ornamental window, dial Knob with pot.meter (1) Knob (5) | Sierraam, schaal Knop met pot.meter (1) Knop (5) | Zierrahmen, Skala Knopf mit Lautstärker.(1) Knopf (5) | Fenêtre enjoliveuse, cadran Bouton avec potmètre (1) Bouton (5) | WE 683 46 WE 367 09 WE 744 42 | Ventana ornamental, cuadrante Botón con pot.metro (1) Botón (5) |
| Bracket with rolls Roll Ring for WE 340 08 Slide, band switch | Beugel met rollen Rol Ring voor WE 340 08 Schuif, golfschakelaar | Regel mit Rollen Rolle Ring für WE 340 08 Scheibe, Wellenbereichsch. | Equerre avec des rouleaux Rouleau Anneau pour WE 340 08 Coulisse comm. des gammes | WE 340 13 WE 744 78 WE 306 89 WE 744 43 | Abrazadera con rodillos Rodillo Anillo para WE 340 08 Corredora comm. de ondas |
| Carrying bag Dial | Draagtas Schaal | Tragetasche Skaal | Sac à bandoulière Cacren | WE 417 86 WE 221 59 | Bolsa con bandolera Cuadrante |
| S3 S4 | Input coil Ingangspoel Eingangsspoel Bobine d'entrée Bobina de entrada | S11 S11' C19 | I.P. circuit P.M. M.F.-kring, P.M. ZF-Kreise, FM Circuit de M.F., P.M. Circuito de F.I., P.M. | S25 S25' S36 S26 WE 122 13 S27 S27' | Ratio detector Ratiostator Ratiostator Ratiostator Detecteur de rapport Detecteur de relación |
| S5 | Intermediate circuit coil Tussenkringspoel Zwischenkreisspoel Bob.de circuit intermédiaire Bob.de circuito intermediare | S12 S13 S14 S15 S16 | Rod aerial Staanantenne Stabantenne Cadre ferroceube Antena de varilla | S28 S29 C38 S15 | I.F. circuit, A.M. M.F.-kring, A.M. Z.F.-kreise, A.M. Circuit de M.F., A.M. Circuito de F.I., A.M. |
| S6 | Choke coil Smoorspoel Drossel Self Bobina de choke | S16' S17 S18 C24 S19 | Oscillator circuit Oscillatorkring Oscillatorkreis Circuit oscillateur Circuito oscilador | S30 S31 S31' | Driver transformer Ingangstransformator Treibertransformator Transformateur de déphasage Transformador de entrada |
| S7 | Oscillator coil, P.M. Oscillatortpoel, P.M. Oscillatortpoel, F.M. Bob. d'oscillateur, P.M. Bob. de oscillateur, P.M. | S20 S20' C25 | I.P. circuit A.M. M.F.-kring, A.M. ZF-Kreise, AM | S22 S24 S24' | Output transformer Uitgangstransformator Ausgangstransformator Transformateur de sortie Transformador de salida |
| S8 S9 | I.P. coil M.F.-spoel ZF-Spoel Bobine de M.F. Bobina de P.I. | S22 S23 S23' C31 S24 | I.F. circuit, A.M.-P.M. M.F.-kring, A.M.-P.M. ZF-Kreise, AM-FM Circuit de M.F., A.M.-P.M. Circuito de F.I., A.M.-P.M. | C15 C16 C17 WE 346 89 C18 | Variable capacitor Variabele condensator Drehkondensator Condensateur variable Condensador variable |
| C13 C20 C26 C27 | WN 401 73 WN 401 72 WN 401 72 WN 401 74 | C46 909/050 C47 909/050 C48 909/050 C49 909/050 C50 909/050 | WN 401 73 909/050 909/050 909/050 909/050 909/050 909/050 | WE 401 73 909/050 909/050 909/050 909/050 909/050 909/050 | E 201 EC/A130E E 367 09 E 551 AA/59+36 E 551 AA/59+36 E 551 AA/59+36 E 551 AA/59+36 |

